

# AI CLOUD TECH

Solar EPC Solutions & Infrastructure Excellence

Delivering engineered solar solutions that optimize energy efficiency and reduce environmental impact.



[www.aicloudtechsolarepc.com](http://www.aicloudtechsolarepc.com)



8125592883  
7569691818



## AI CLOUD TECH

AI Cloud Tech is a leading solutions provider in solar EPC (Engineering, Procurement & Construction), delivering end-to-end solar infrastructure services with a strong focus on precision engineering, safety, and long-term performance.

We specialize in high-accuracy piling works, robust module mounting structures (MMS), efficient solar module installation, and complete AC/DC electrical execution. Our experienced execution teams ensure every project is delivered to the highest technical and quality standards.

# Our Core Services

## *1. Piling Works*

AI CLOUD TECH deploys advanced hydraulic and robotic piling machinery to achieve accurate pile depth, alignment, and structural stability. Each pile undergoes stringent testing for verticality, torque resistance, and earth resistance, ensuring compliance with engineering and site-specific standards.

Key Highlights:

- High-precision pile alignment
- Advanced machinery deployment
- Structural and safety compliance



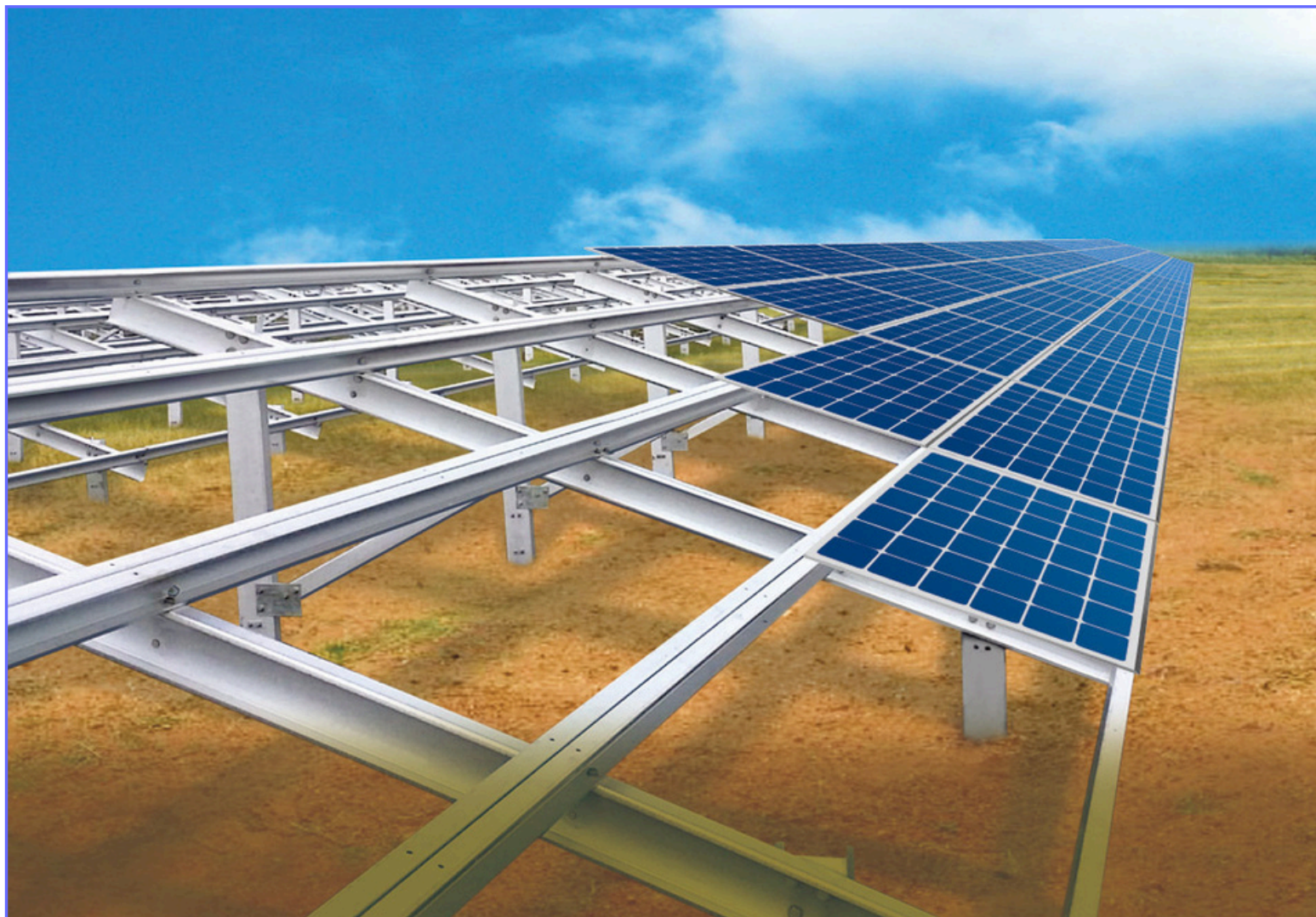
Precision Foundations for Solar Infrastructure

## *2.MMS (Module Mounting Structure) Installation*

We fabricate and install corrosion-resistant Module Mounting Structures (MMS) designed to withstand wind loads, environmental stress, and long-term exposure.

### *2.1 Solar MMS Tracker Installation*

We provide advanced Solar MMS Tracker Installation systems engineered to maximize solar exposure. With single-axis and dual-axis tracking, integrated control systems, and expert execution



Strong, Durable & Weather-Resistant Structures

## *3. Solar Module Installation*

Our skilled technicians perform fast and accurate solar module installation, following optimized string planning, precise tilt-angle alignment, and strict safety protocols. Anti-static handling procedures are used to protect solar modules and maintain performance integrity.

### Key Highlights:

- Optimized string planning
- Accurate tilt & alignment
- Safety-first installation approach



Efficient, Safe & Error-Free Execution

## 4. AC & DC Electrical Works

AI CLOUD TECH provides complete AC & DC electrical solutions, including DC stringing, earthing, inverter installation, cable tray routing, and grid synchronization. All electrical works are executed in compliance with IEC standards and industry safety norms.

### Key Highlights:

- DC & AC wiring and stringing
- Inverter & earthing systems
- Grid synchronization support
- Earthing & lightning protection systems



End-to-End Electrical Integration

## 5. 33kV & 11kV Electrical Works

We specialize in the execution, installation, and maintenance of 33kV and 11kV electrical systems, delivering reliable and efficient power solutions for industrial, commercial, and utility-scale applications.

### Key Highlights:

- Erection and commissioning of 33kV & 11kV substations
- Installation of transformers, HT panels, and switchgear
- High-voltage cable laying, termination, and testing
- Overhead and underground transmission & distribution lines
- Operation, maintenance, and system support services



High-Performance Power Distribution Solutions

## *6. Substation Bay Extension Works*

We offer specialized services in substation bay extension works, enabling seamless expansion of existing substations to meet growing energy demands. Our approach ensures minimal disruption while enhancing system performance and reliability.

### Key Highlights:

- Design and engineering of substation bay extensions
- Installation of circuit breakers, isolators, CTs, and PTs
- Busbar extension, modification, and system integration
- Control panel wiring, protection systems, and SCADA integration
- Cable laying, termination, testing, and commissioning



Efficient Grid Infrastructure Expansion

## Testing & Commissioning Expertise (Solar Projects)

### **Comprehensive Pre-Commissioning Checks :**

Detailed inspection of modules, MMS, inverters, DC/AC cabling, earthing, and BOS components prior to energization.

### **String & Electrical Testing :**

Execution of string voltage, polarity, continuity, insulation resistance (IR), and earth resistance tests to ensure electrical safety and system integrity.

### **Inverter & Power Conditioning Testing :**

Verification of inverter configuration, protection settings, synchronization, efficiency, and fault response as per OEM and grid requirements.

### **Grid Synchronization & Protection Testing :**

Anti-islanding tests, relay coordination, and protection checks to ensure seamless and compliant grid integration.

### **Performance Ratio (PR) & Generation Validation :**

Performance testing to validate energy generation, PR, and output against design and contractual benchmarks.

### **SCADA & Monitoring System Commissioning :**

Testing and commissioning of SCADA systems, data loggers, communication networks, and remote monitoring platforms for real-time performance tracking.

### **Safety & Compliance Assurance :**

Strict adherence to IEC, IS, IEEE, and local regulatory standards to ensure safe operation and long-term reliability.

### **Documentation & Project Handover :**

Submission of complete testing reports, commissioning certificates, as-built drawings, and O&M manuals.

### **Defect Identification & Rectification :**

Early detection of installation or performance issues with timely corrective actions before final acceptance.

### **Early-Life Support & Smooth Handover :**

On-site and remote support during initial plant operation to ensure stable performance in the early generation phase.

End-to-End AC & DC Electrical Execution

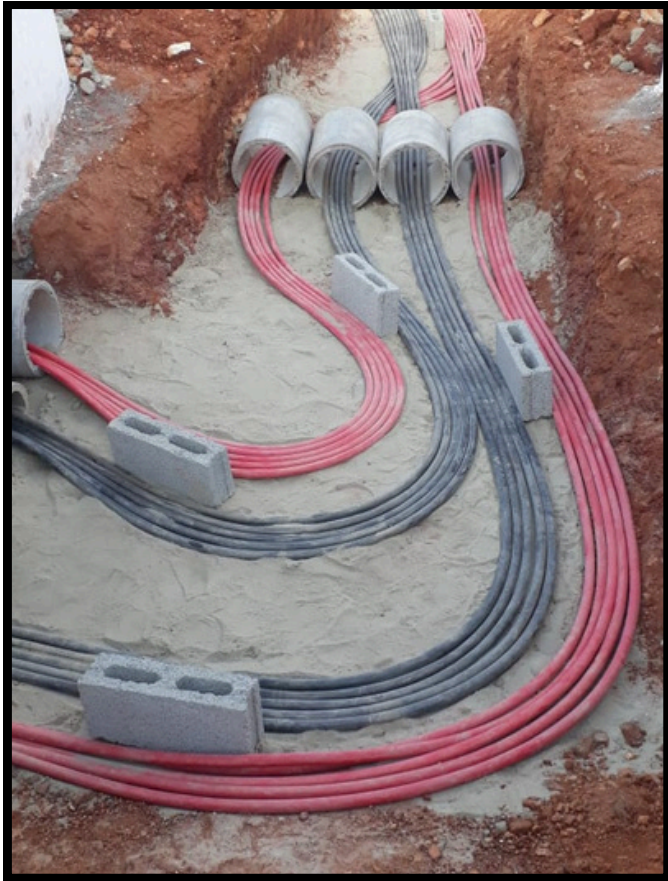
*Our Valued Clients*



# FIELD EXECUTION SNAPSHOTS



# FIELD EXECUTION SNAPSHOTS



# *Why Choose AI CLOUD TECH?*

**Grade 'A' Contractor Licence :**

Authorized and qualified to execute large-scale solar and electrical infrastructure projects in compliance with statutory norms.

**Experienced Solar EPC Execution Team**

Skilled engineers, supervisors, and technicians with hands-on experience across utility-scale and commercial solar projects.

**End-to-End EPC Capabilities :**

Single-point execution covering civil, structural, mechanical, electrical, testing, and commissioning works.

**Precision Engineering & Quality Assurance :**

Strong focus on engineering accuracy, material quality, and process compliance at every project stage.

**On-Time Project Delivery :**

Proven ability to deliver projects within committed timelines through disciplined planning and execution.

**Safety-Driven Operations :**

Strict adherence to safety protocols, PPE compliance, and site safety standards to ensure zero-incident execution.

**Standards & Compliance Focused :**

All works executed as per IEC, IS, and applicable grid and utility standards.

**Scalable & Cost-Effective Solutions :**

Capable of handling projects of varying capacities with optimized cost and resource efficiency.

**Client-Centric Execution Approach :**

Transparent communication, customized solutions, and long-term relationship focus.

**Reliable Partner for Solar Infrastructure**

Trusted by reputed developers and EPC players for consistent quality and performance.

# *Passion Towards Sustainable Environmental Growth*

## **Committed to a Cleaner, Greener Future**

AI CLOUD TECH is driven by a strong passion for environmental responsibility and sustainable development. Through our solar EPC solutions, we actively contribute to reducing carbon emissions, promoting clean energy adoption, and supporting long-term environmental growth. Our approach integrates engineering excellence with sustainability, ensuring that every project is designed and executed to minimize environmental impact while maximizing energy efficiency and reliability.

## **Our Sustainability Commitment**

- Promoting large-scale adoption of clean and renewable solar energy
- Reducing carbon footprint through efficient project execution
- Following eco-friendly construction and waste management practices
- Optimizing designs for long-term energy efficiency
- Supporting national and global renewable energy & climate goals
- Ensuring compliance with environmental and safety regulations

## **Beyond Projects**

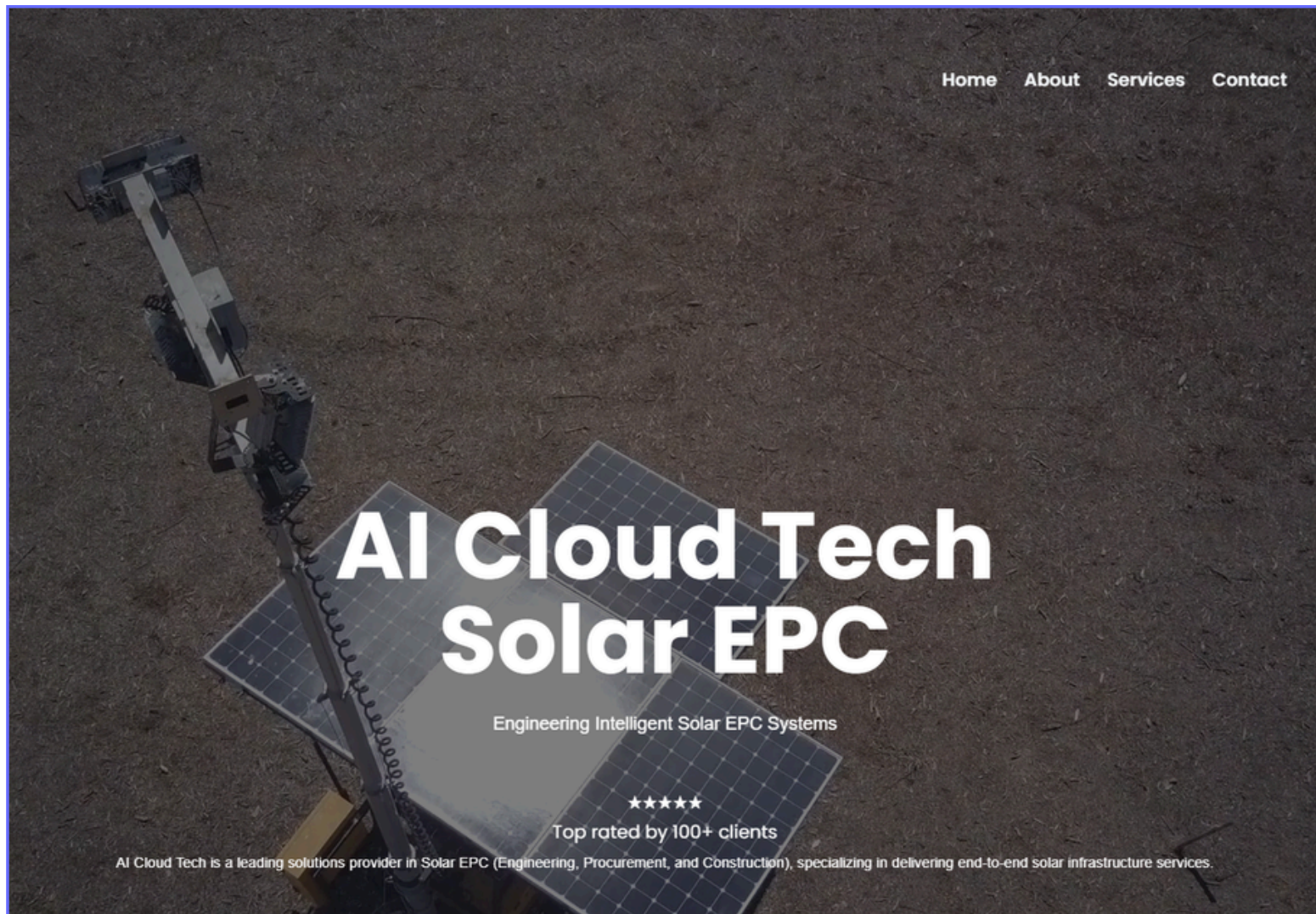
We believe sustainability is not just a goal, but a responsibility. By combining technology, innovation, and responsible execution, AI CLOUD TECH plays an active role in shaping a sustainable energy future for generations to come.

# Visit Our Website

*Explore our complete range of services, project capabilities, and company insights on our official website.*

*Stay updated with our latest projects, technical expertise, and service offerings.*

 [www.aicloudtechsolarepc.com](http://www.aicloudtechsolarepc.com)



Scan to view us on



Contact Us

# AI CLOUD TECH

Solar EPC Solutions & Infrastructure Excellence



8125592883

7569691818

Scan to Chat

on  WhatsApp



[contact@aicloudtechsolarepc.com](mailto:contact@aicloudtechsolarepc.com)



[www.aicloudtechsolarepc.com](http://www.aicloudtechsolarepc.com)